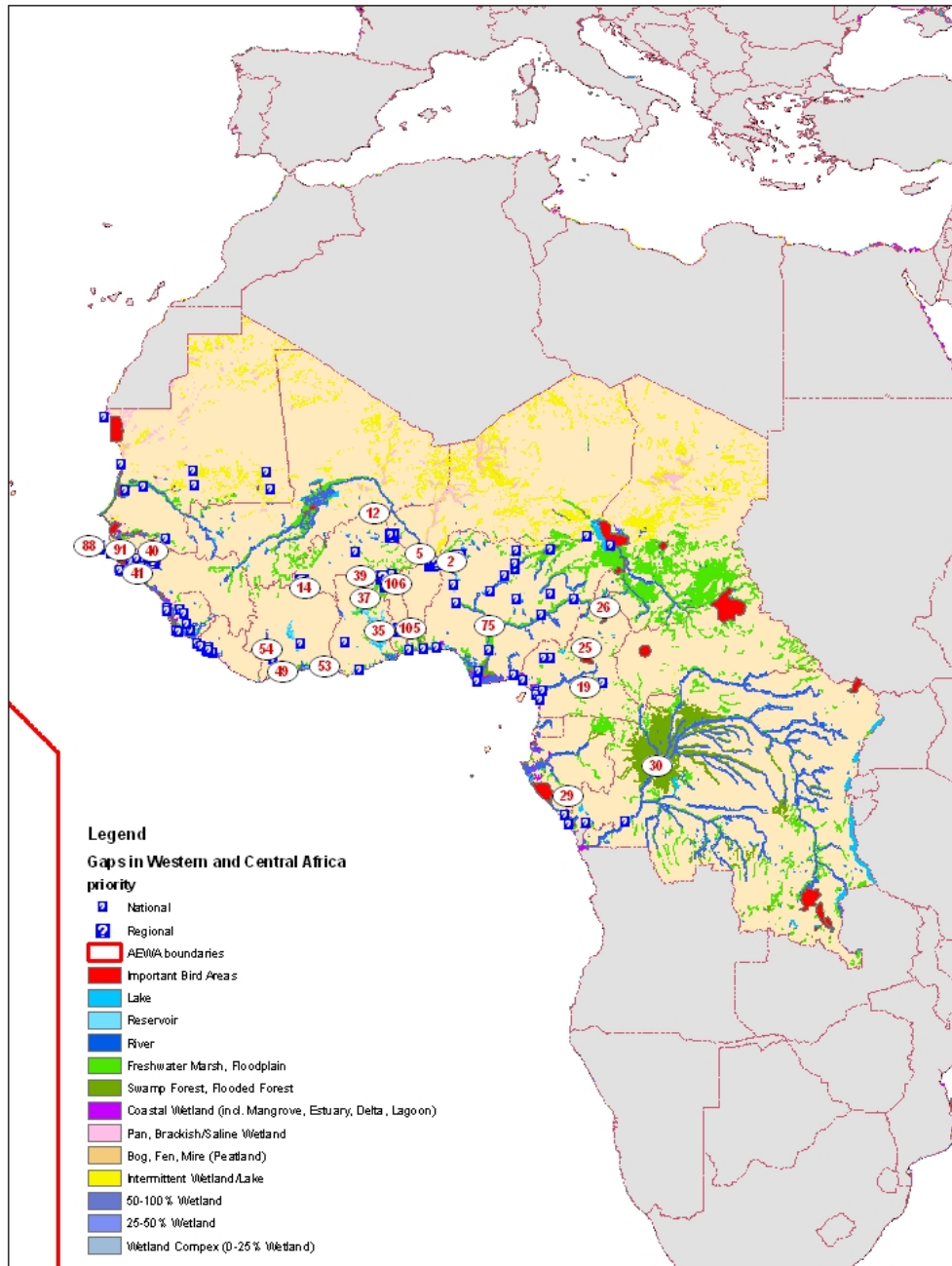


## Western and Central Africa Sub region



ID	country	site	species site may be important for	longitude	latitude	priority	transboundary site
1	Benin	site Alpha Koara		3.1707917	11.7124917	2	
2	Benin	Vallee du fleuve Niger		3.5458528	11.7355556	2	yes
3	Benin	Border Benin Togo		1.793525	6.3022722	1	yes

ID	country	site	species site may be important for	longitude	latitude	priority	transboundary site
4	Benin	Border Benin Nigeria		2.7077528	6.451075	1	
5	Benin	La gorge du Mekreou		2.4989167	12.2655861	2	
6	Burkina Faso	Kompienga		0.753375	11.0068056	1	
7	Burkina Faso	Tapoa		2.0442222	12.3345	1	
8	Burkina Faso	Darkoye		0.6661778	13.5000611	1	
9	Burkina Faso	Ouaga Nord		-1.5404361	12.3879139	1	
10	Burkina Faso	Gnayeri + Pambasa			2 12.3333333	1	
11	Burkina Faso	Lake Higa	Black crowned crane, African Openbill, Common snipe, Great snipe, Limosa limosa, African Skimmer, Marbled teal	0.75	13.5	2	
12	Burkina Faso	Konsi + Kichi	Black crowned crane, Common snipe, Allena gallinule, Cicognia abdimi	-0.3333333	14.75	2	
13	Burkina Faso	Tengrela	Common snipe	-4.8422444	10.6532306	2	
14	Burkina Faso	Folonzo area		-4.6715139	10.1179222	2	
15	Cameroon	Ndian basin	african skimmer	8.9197167	4.4631944	1	
16	Cameroon	Wouri estuary	grey pratincole	9.7548556	3.7456667	1	
17	Cameroon	Lower Sanaga	grey pratincole, little egret, african skimmer	9.679925	3.5746667	1	
18	Cameroon	Lake Chad	garganey, black crowned crane	14.3511556	12.8345667	1	
19	Cameroon	upper Nyong-Ayos	Hartlaub's duck	12.7393	3.9690722	2	
20	Cameroon	Lake Ossa	hartlaub's duck, grey heron	10.0837806	3.7772194	1	
21	Cameroon	Nyong Estuary	Hartlaub's duck	9.9575889	3.2659556	1	
22	Cameroon	Bamenjim Dam	yellow billed duck	10.5756278	5.8287389	1	
23	Cameroon	Djal	squaco heron	13.8005056	4.2742806	1	
24	Cameroon	Lake Awing	lesser moorhen, grey heron, little egret	10.1981139	5.8616194	1	
25	Cameroon	Mbam-Djerem		12.8088	6.3862417	2	
26	Cameroon	Upper Benoue Basin		13.886725	8.8917528	2	
27	Congo	Conkouati - Brazzaville	yes	11.5131667	-3.9131611	1	
28	Congo	Bassin du Kouilou	plusieurs sternes	11.7695583	-4.4760611	1	
29	Congo	Mont Fouari		11.6417528	-2.768725	2	
30	Congo	Lekoula aux herbes		17.1486333	-0.8974833	2	
31	Congo	Ile du Diable	purple heron, wooly-	15.2144278	-4.3217417	1	

ID	country	site	species site may be important for	longitude	latitude	priority	transboundary site
		Brazzaville	necked stork				
32	Congo	sites de Manga-Kala et Brazzaville		12.8246167	-4.3712	1	
33	Ghana	Boukoupaka Hale Beach	terns, waders	-3.0160222	5.0958472	1	
34	Ghana	Elmina Salt Plains	terns, waders	-1.25	5.0833333	1	
35	Ghana	Volta System	herons, ducks	-0.0833333	7.5	2	
36	Ghana	Owabi		-2.1832028	6.8339722	1	
37	Ghana	Bontanga Irrigation dam	ducks	-0.9166667	9.75	2	
38	Ghana	Veia irrigation dam	ducks	-0.851375	10.8667639	2	
39	Ghana	Tono irrigation dam	ducks	-1.1470472	10.8731167	2	
40	Guinea-Bissau	Vendutchan		14.0543444	- 11.864775	2	
41	Guinea-Bissau	Cantanhfi		15.0257056	- 11.01105	2	
42	Guinea-Bissau	Dulombi		14.7087194	- 11.9972056	1	
43	Guinea-Bissau	Culfada		16.0832167	- 11.2831	1	
44	Guinea-Bissau	Tombali		15.3220667	- 11.1893833	1	
45	Guinea-Bissau	Upper Geba estuary		15.4943139	- 11.8578167	1	
46	Guinea-Bissau	upper Geba		15.0648556	- 11.9812528	1	
47	Ivory Coast	Soubre		-6.5833333	5.75	1	
48	Ivory Coast	Reserve faune Abokouamekro		-4.9166667	6.75	1	
49	Ivory Coast	Complexe Sassandra - Dagbego		-6.0778833	4.96165	2	
50	Ivory Coast	Fresco		-5.5833333	5.0833333	1	
51	Ivory Coast	Grand Bassam		-3.75	5.1666667	1	
52	Ivory Coast	Iles Ehotile Essouman		-3.25	5.25	2	
53	Ivory Coast	Nganda Nganda		-3.4166667	5.25	2	
54	Ivory Coast	Buyo		-7	6.3333333	2	
55	Liberia	lake piso		-11.35	6.75	1	
56	Liberia	Marshall	Hartlaub's duck, cattle egret, intermediate egret	-10.35	6.1833333	1	
57	Liberia	Mesurado	african spoonbill, bar-tailed godwit, cattle egret, intermediate egret, black heron	10.7666667	- 6.35	1	
58	Liberia	Monrovia coastal lagoons		-10.65	6.2333333	1	

ID	country	site	species site may be important for	longitude	latitude	priority	transboundary site
59	Liberia	Lofa River mouth	white-spotted flufftail, cattle egret	-11.1	6.6	1	
60	Liberia	Brewerville	pygmy goose, black heron, intermediate egret, western reef egret, cattle egret	10.6333333	- 6.5333333	1	
61	Liberia	Fendell	pygmy goose, hartlaub's duck, waders, spur-winged goose, white spotted flufftail	10.5666667	- 6.3333333	1	
62	Mauritania	Tamourts-eastern wetlands		-11.5856	17.4640556	1	
63	Mauritania	Tamourts-eastern wetlands		11.4698833	- 16.5636806	1	
64	Mauritania	Tamourts-eastern wetlands		-7.0230639	17.3740556	1	
65	Mauritania	Tamourts-eastern wetlands		-6.7750972	16.2939444	1	
66	Mauritania	Aftout-es-saheli	lesser flamingo	-16.03335	17.8336111	1	
67	Mauritania	Cap blanc		17.0652833	- 20.8170167	1	
68	Nigeria	Niger delta coastal	all migratory waders, african skimmer, african darter	6.0702	4.3481333	1	
69	Nigeria	Niger delta forest	all migratory waders, african skimmer, african darter	6.1598167	4.99285	1	
70	Nigeria	Sokoto-Rima Basin	migratory waders, terrestrial migrants	4.93435	12.15815	2	
71	Nigeria	Kainji Lake	pink-backed pelican, squacco heron	4.5663667	10.3658	1	
72	Nigeria	Lagos Lagoon Lighthouse	african openbill, little egret, hartlaub's duke	3.5	6.5	1	
73	Nigeria	Jebba Lake	pink-backed pelican, squacco heron	4.75	9.25	1	
74	Nigeria	Shiroro Lake	rock & grey pratincole	6.8831833	10.01195	1	
75	Nigeria	Niger-Benue Confluence	Hérons, egrets, wooly-necked stork, white faced tree duck	6.7625	7.79645	2	
76	Nigeria	Lower Benue River Basin	Hérons, egrets, wooly-necked stork, white faced tree duck	10	8.5	1	
77	Nigeria	Upper Benue	Hérons, egrets, wooly-necked stork, white faced tree duck	12.0514833	9.5154167	1	
78	Nigeria	Calabar River Estuary	herons, egrets, migrant waders, african skimmer	8.3474167	4.7733333	1	
79	Nigeria	Tiga Lake	migrant waders, herons, egrets	8.4295167	11.3985667	1	
80	Nigeria	Chalawa Lake	migrant waders, herons, egrets	8.4254333	11.6757667	1	

ID	country	site	species site may be important for	longitude	latitude	priority	transboundary site
81	Nigeria	Mouth of river Yobe	Feruginous duck, migrant waders, white faced tree duck, little tern, herons, black crowned crane	12.8437667	13.4119833	1	
82	Nigeria	Hadejia Nguru Wetlands	heron, egrets, ducks, geese	10.58335	12.5921167	1	
83	Nigeria	Yankari Game Reserve	goliath heron, saddle billed stork, black heron, hadeda ibis	10.6099167	9.8451	1	
84	Nigeria	Lower Niger Basin	hartlaub's duck	6.7393	6.3424333	1	
85	Nigeria	Zaria lake complex	migrant waders, black winged stilt	7.7700333	10.9589	1	
86	Nigeria	Kagoro-Nindam F.R.	brown-chested wattled plover	8.5106667	9.4890833	1	
87	Nigeria	Kazaure Wetlands	ferruginous duck	8.5	12.5	1	
88	Senegal	Tiobon	pelicans and herons	-17.5	12.75	2	
89	Senegal	Afinian - Adeane	pelicans and herons, possible saddle-billed stork	-16.5	12.5	2	
90	Senegal	PN Niokolo Koba	saddle-billed stork, marabou	13.3092306	- 13.2081194	1	
91	Senegal	Est de Djembering	herons, spoonbills, flamingos	16.0833333	- 12.5	2	
92	Senegal	Lac du Guiers	black crowned crane ?	15.8318528	- 16.2500861	1	
93	Senegal	Fleuve du Senegal est de Richard Toll	black crowned crane ?	14.6666667	- 16.5	1	
94	Sierra Leone	south Turtle islands	Waders, terns	12.6657861	- 7.5321222	1	
95	Sierra Leone	Sherbro river estuary	Waders, terns	12.4321278	- 7.4651	1	
96	Sierra Leone	Sewa wange river, lake Mape, Lake Mabesi	Waders, terns, pelicans	-1151.963	7.1768111	1	
97	Sierra Leone	Scarcies river estuary	Waders, terns, pelicans, ducks	13.1851444	- 8.9646194	1	
98	Sierra Leone	Rhanbe swamps	Waders, terns, ducks	13.2321333	- 8.8047833	1	
99	Sierra Leone	Manunta Mayoso	Waders, terns	12.3913611	- 8.8450583	1	
100	Sierra Leone	Kumrabai Plain	Ducks, egrets	12.1538194	- 8.5752056	1	
101	Sierra Leone	south bandajuma swamps	Ducks, egrets	11.7497222	- 7.5313722	1	
102	Sierra Leone	Bumpar	Ducks, egrets	11.9408889	- 7.9332694	1	
103							
104	Togo	Dapaong		0.165817	10.8394	2	
105	Togo	Nangbeto		1.28231	7.60359	2	
106	Togo	Domain Gravioux		0.470587	10.4034	2	